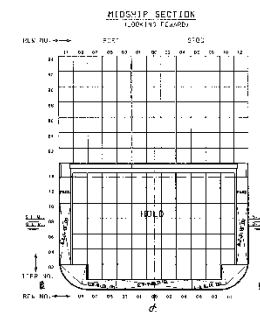
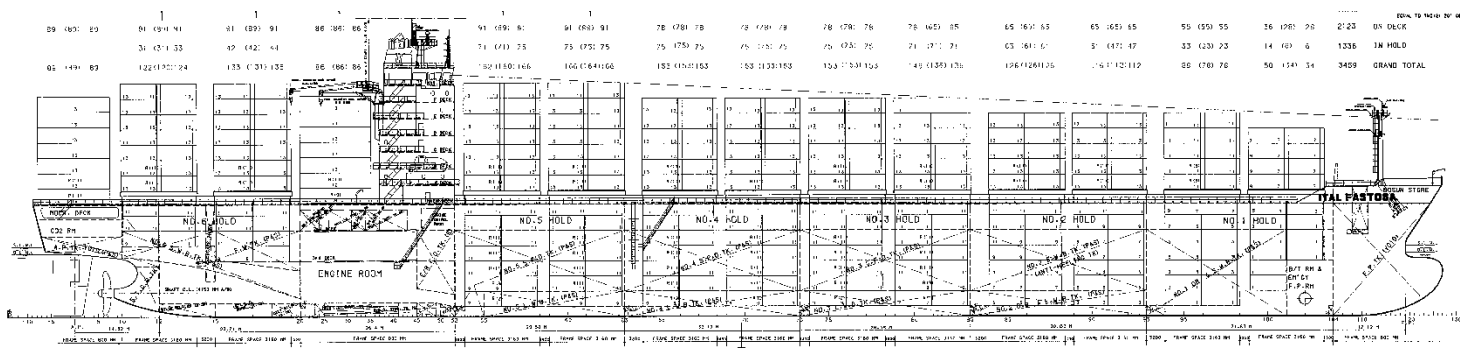


"RICHARD RICKMERS" Hyundai Mipo Dockyard Co. Ltd. 3450 TEU CLASS CONTAINERSHIP



MAIN PARTICULARS

Length o. a.	approx.	239.00 m
Length b.p.p.		225.50 m
Breadth		32.00 m
Depth to main deck		19.20 m
Draught, designed		10.80 m
Draught, scantling		12.00 m
Deadweight on Td	approx.	35,900 mt
Deadweight on Ts	approx.	43,100 mt

Service Speed 23.50 kn
(at 90% MCR, and 15% sea margin)

Class:
Germansicher Lloyd
GL ✕ 100 A5, "Container ship", ✕ MC, AUT, RSD,
IW, Solas, BWM-F, Ch.II-2 Reg. 19, RCP 550/20

TANK CAPACITIES

Heavy fuel oil	apprx.	4,300 m ³
Marine diesel oil	apprx.	200 m ³
Fresh water	apprx.	200 m ³
Ballast water	apprx.	12,300 m ³

MAIN ENGINE

MAN B&W		7K90MC-C
MCR		31,972 kW at 104.0 RPM
		28,774 kW at 100.4 RPM
Bow thruster		1x1,200 kW

FUEL OIL CONSUMPTION OF MAIN ENGINE

F.O.C at NCR	apprx.	105.40 MT/day
Cruising range	apprx.	18,600 NM

POWER SUPPLY

Diesel generator		2x2,050 kW
		2x1,800 kW
Emergency generator		1x180 kW

CARGO HATCH COVER

Type : Pontoon type with manual
hold device non-sequential opening
Stack weight : 90mt/20ft & 120mt/40ft
Panel weight : max. 34 mt
(Excluding fixed lashing equipment&fittings)

COMPLEMENT

28 P

CONTAINER CAPACITIES

With max. number of containers		IMO visibility guidance
On deck (7tiers)		2,120 TEU
In hold		1,330 TEU
Total		3,450 TEU

Rows max. in holds/on hatches	11/13 Rows
Tiers max. in holds/on hatches	7/7 Tiers

El. Plugs/for reefer container/total	550 plugs
On deck	280 pcs
below deck (only in hold no.5)	270 pcs

With Panama Canal Visibility
apprx. 2255 TEU
(normal condition with 20 feet containers.)

Stability (14/TEU homo. Scantling) 2,370 TEU